

RM of DUNDURN  
SASKATCHEWAN

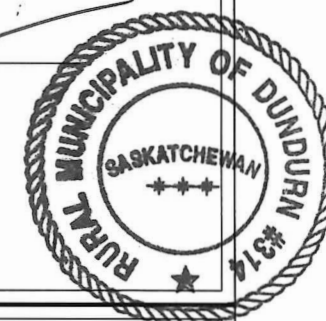
ZONING DISTRICT MAP

ZONING DISTRICTS

- PR PARKS & RECREATIONAL DISTRICT
- RR1 LOW DENSITY COUNTRY RESIDENTIAL
- C2 COMMERCIAL RECREATIONAL DISTRICT
- IR INSTITUTIONAL RECREATION DISTRICT
- LD1 LAKESHORE DEVELOPMENT
- M1 INDUSTRIAL
- A AGRICULTURAL DISTRICT
- C1 COMMERCIAL & LIGHT INDUSTRIAL DISTRICT
- DUNDURN MILITARY CAMP
- PARKS
- RESERVOIR DEVELOPMENT AREA

This is the Zoning District Map which accompanies Bylaw Number 6-2024 adopted by the RM of Dundurn.

Reeve  
CAO

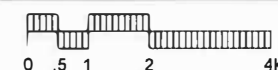


**CROSBY HANNA & ASSOCIATES**  
LANDSCAPE ARCHITECTURE  
COMMUNITY PLANNING  
407C 1st Ave. North  
Saskatoon, SK S7K 1X5  
www.crosbyhanna.ca  
T (306) 665-3441  
F (306) 652-9613

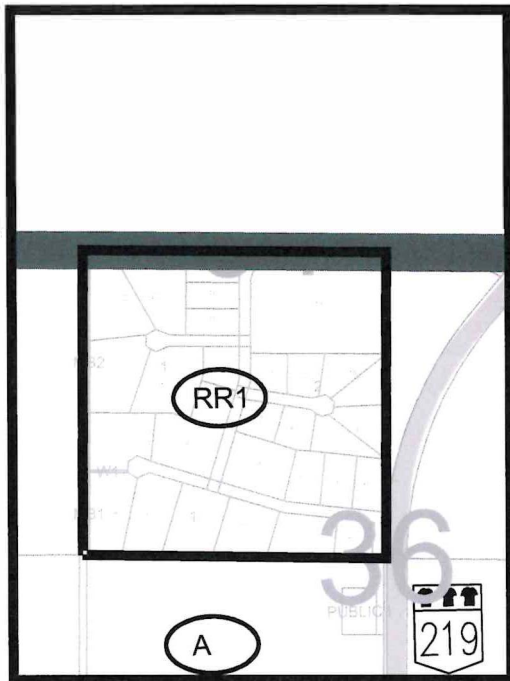
PAGE 1 OF 5



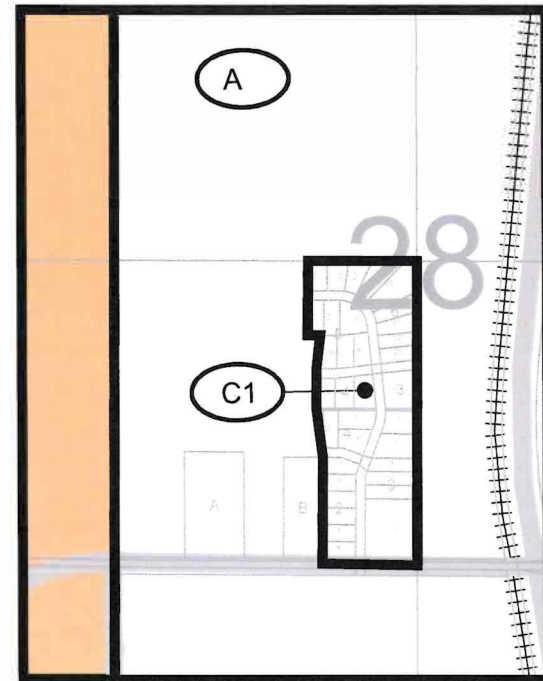
DATE  
2020-08-20  
PROJECT NO.  
CHA 20049



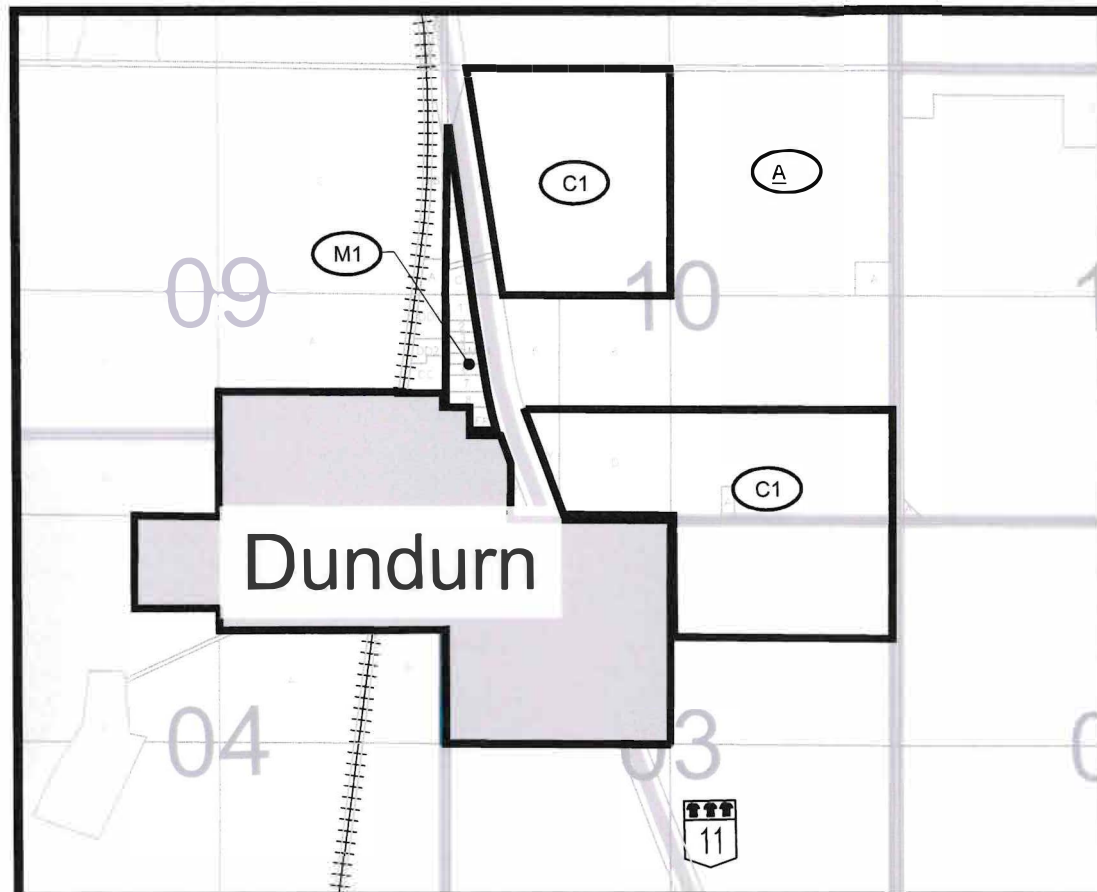




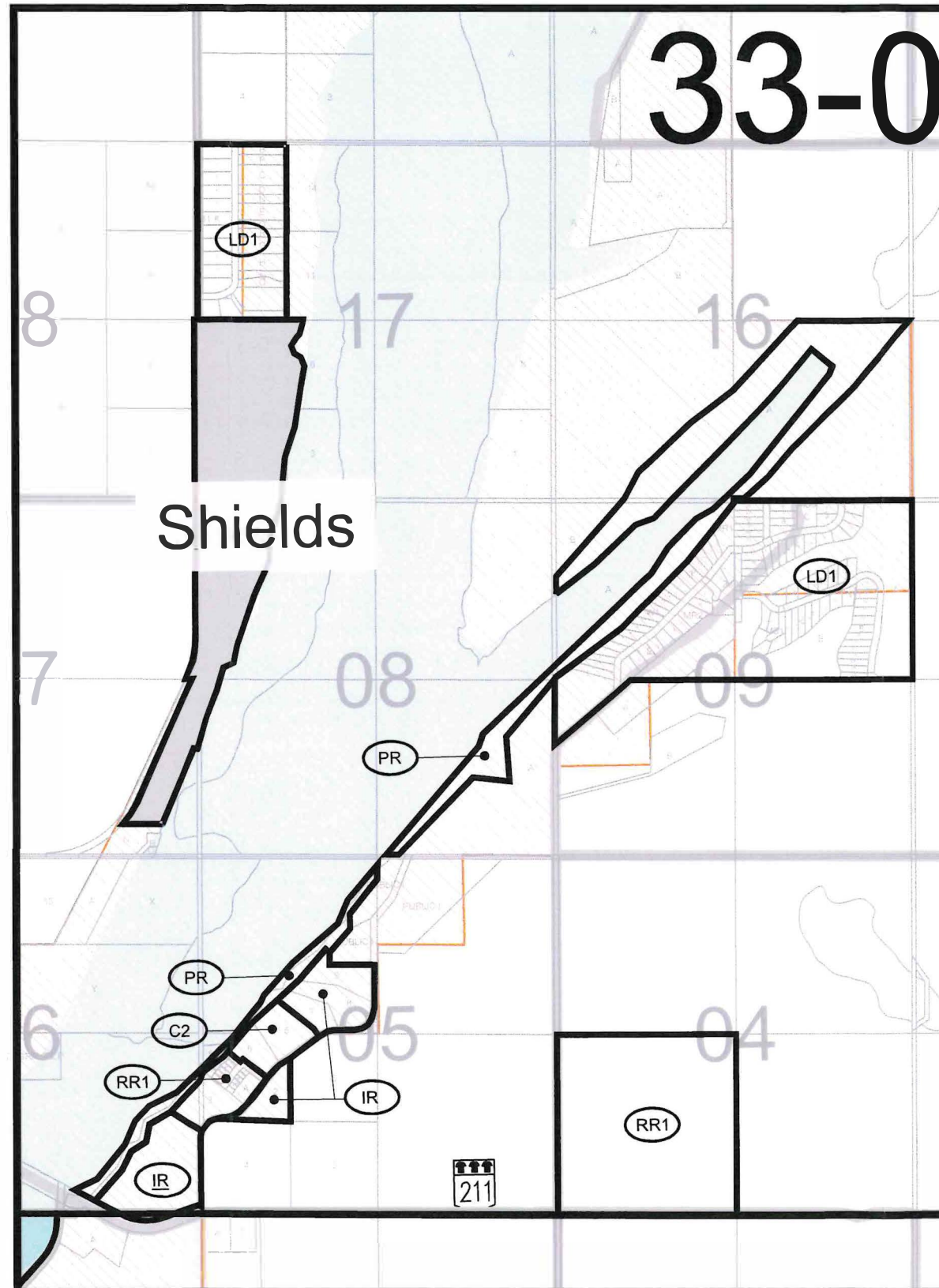
A



B



C



D

# RM of DUNDURN SASKATCHEWAN

## ZONING DISTRICT MAP

### ZONING DISTRICTS

- PR PARKS & RECREATIONAL DISTRICT
- RR1 LOW DENSITY COUNTRY RESIDENTIAL
- C2 COMMERCIAL RECREATIONAL DISTRICT
- IR INSTITUTIONAL RECREATION DISTRICT
- LD1 LAKESHORE DEVELOPMENT
- M1 INDUSTRIAL
- A AGRICULTURAL DISTRICT
- C1 COMMERCIAL & LIGHT INDUSTRIAL DISTRICT
- DUNDURN MILITARY CAMP
- PARKS
- RESERVOIR DEVELOPMENT AREA

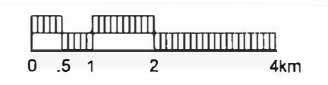
• This is the Zoning District Map which accompanies Bylaw Number 6-2024 adopted by the RM of Dundurn.

Reeve

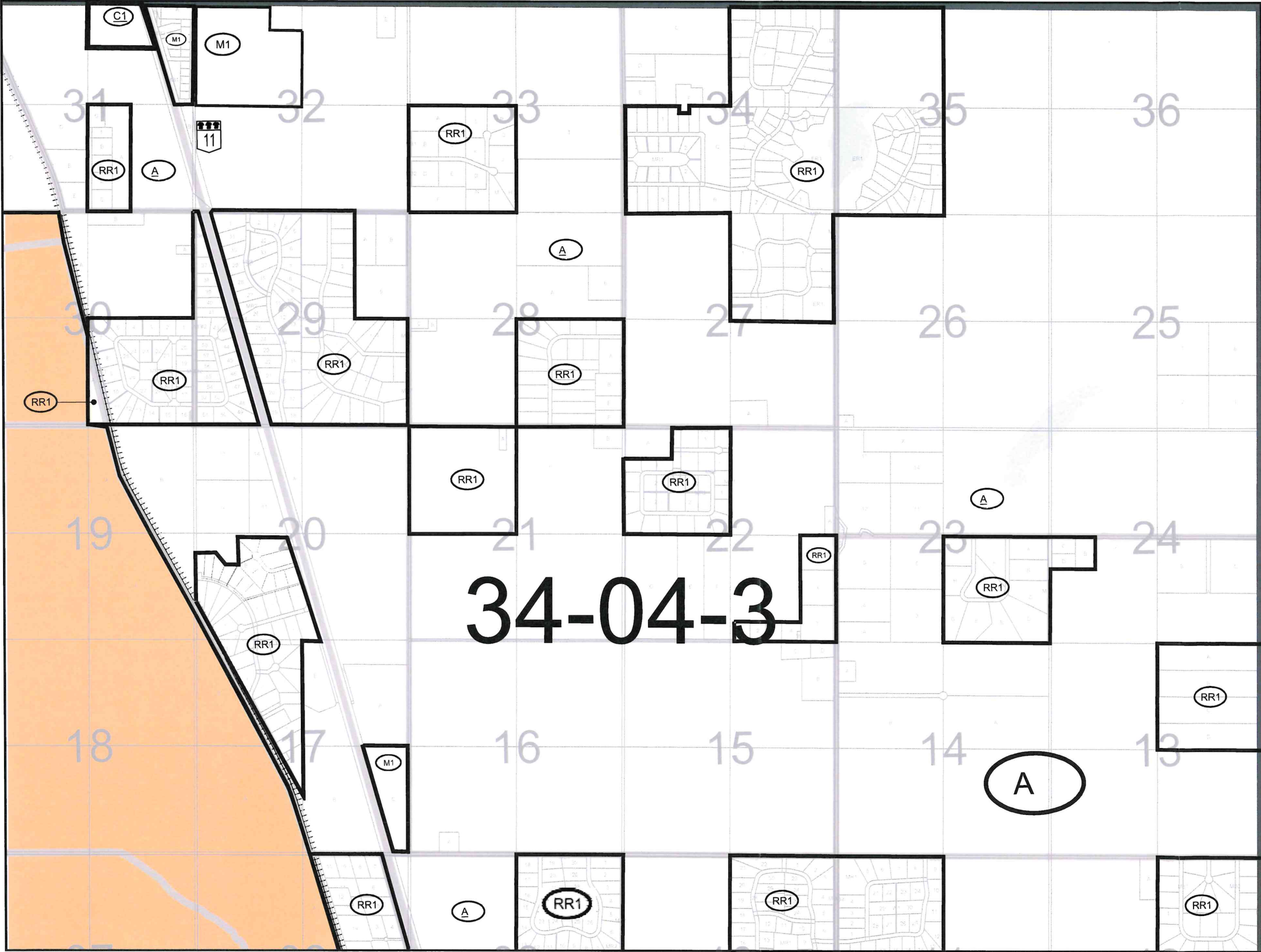
CAO



**CROSBY HANNA & ASSOCIATES**  
 LANDSCAPE ARCHITECTURE  
 COMMUNITY PLANNING  
 407C 1st Ave. North  
 Saskatoon, SK S7K 1X5  
 www.crosbyhanna.ca  
 T (306) 665-3441  
 F (306) 652-9613







RM of DUNDURN  
SASKATCHEWAN

ZONING DISTRICT MAP

ZONING DISTRICTS

- PR PARKS & RECREATIONAL DISTRICT
- RR1 LOW DENSITY COUNTRY RESIDENTIAL
- C2 COMMERCIAL RECREATIONAL DISTRICT
- IR INSTITUTIONAL RECREATION DISTRICT
- LD1 LAKESHORE DEVELOPMENT
- M1 INDUSTRIAL
- A AGRICULTURAL DISTRICT
- C1 COMMERCIAL & LIGHT INDUSTRIAL DISTRICT
- DUNDURN MILITARY CAMP
- PARKS

• This is the Zoning District Map which accompanies Bylaw Number 6-2024 adopted by the RM of Dundurn.

Reeve

CAO



CROSBY  
HANNA  
& ASSOCIATES



LANDSCAPE ARCHITECTURE  
COMMUNITY PLANNING

407C 1st Ave. North  
Saskatoon, SK S7K 1X5  
www.crosbyhanna.ca

T (306) 665-3441  
F (306) 652-9613

PAGE 3 OF 5



DATE

2020-08-20

PROJECT NO.

CHA 20049

0 100 250 500 1000 m





RM of DUNDURN  
SASKATCHEWAN

ZONING DISTRICT MAP

ZONING DISTRICTS

- PR PARKS & RECREATIONAL DISTRICT
- RR1 LOW DENSITY COUNTRY RESIDENTIAL
- C2 COMMERCIAL RECREATIONAL DISTRICT
- IR INSTITUTIONAL RECREATION DISTRICT
- LD1 LAKESHORE DEVELOPMENT DISTRICT
- M1 INDUSTRIAL
- A AGRICULTURAL DISTRICT
- C1 COMMERCIAL & LIGHT INDUSTRIAL DISTRICT
- DUNDURN MILITARY CAMP
- PARKS

This is the Zoning District Map which  
accompanies Bylaw Number 6-2024  
adopted by the RM of Dundurn.

Reeve

CAO



**CROSBY  
HANNA  
& ASSOCIATES**  
LANDSCAPE ARCHITECTURE  
COMMUNITY PLANNING  
407C 1st Ave. North  
Saskatoon, SK S7K 1X5  
www.crosbyhanna.ca  
T (306) 665-3441  
F (306) 652-9613

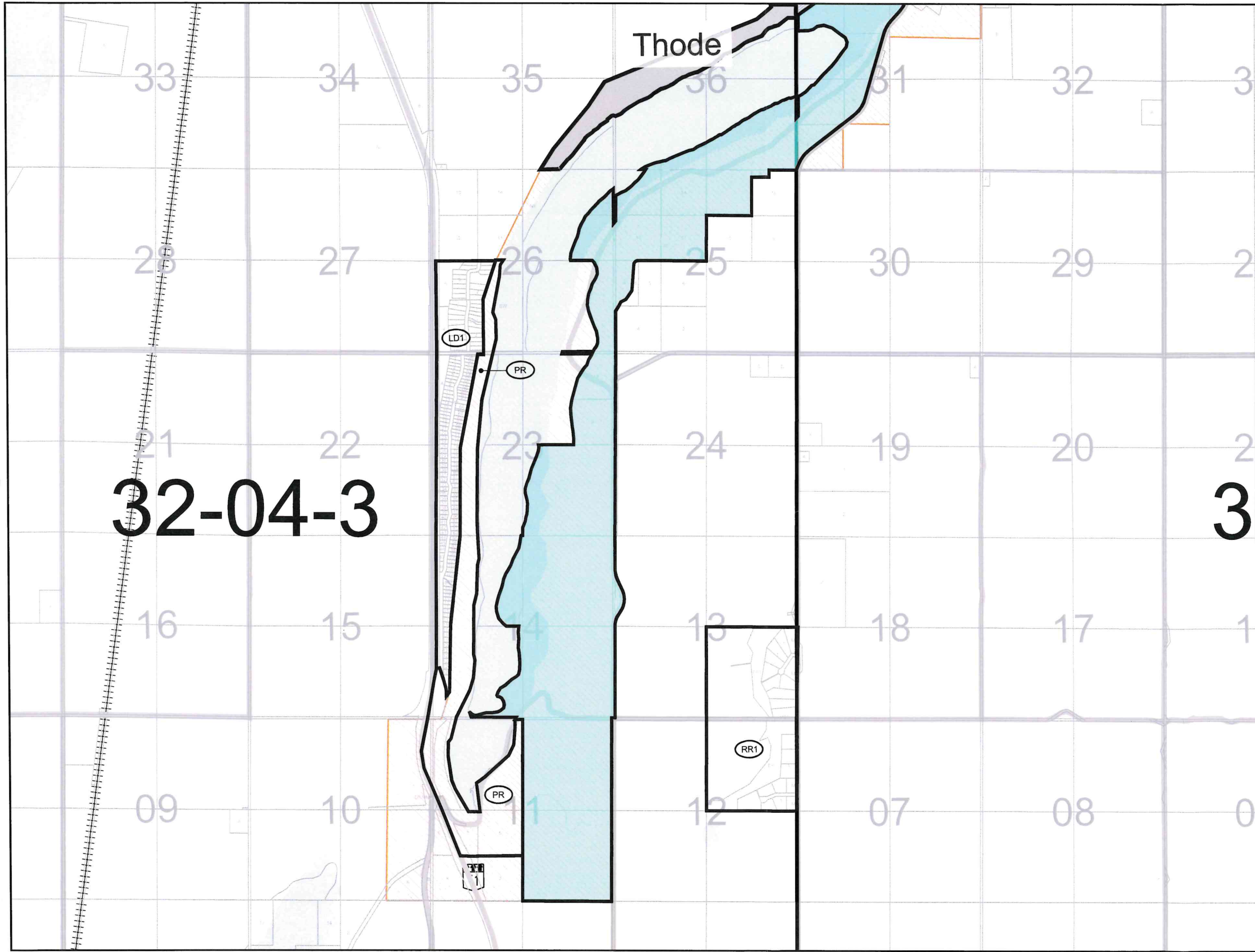
PAGE 4 OF 5



DATE  
2020-08-20  
PROJECT NO.  
CHA 20049







32-04-3

32

RM of DUNDURN  
SASKATCHEWAN

ZONING DISTRICT MAP

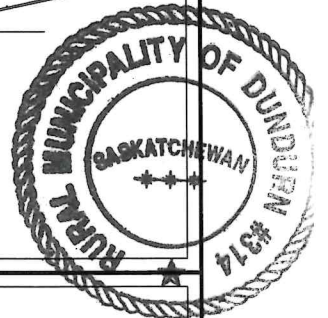
ZONING DISTRICTS

- PR PARKS & RECREATIONAL DISTRICT
- RR1 LOW DENSITY COUNTRY RESIDENTIAL
- C2 COMMERCIAL RECREATIONAL DISTRICT
- IR INSTITUTIONAL RECREATION DISTRICT
- LD1 LAKESHORE DEVELOPMENT DISTRICT
- M1 INDUSTRIAL
- A AGRICULTURAL DISTRICT
- C1 COMMERCIAL & LIGHT INDUSTRIAL DISTRICT
- DUNDURN MILITARY CAMP
- PARKS
- RESERVOIR DEVELOPMENT AREA

This is the Zoning District Map which accompanies Bylaw Number 6-2024 adopted by the RM of Dundurn.

Reeve

CAO



**CROSBY HANNA & ASSOCIATES**  
LANDSCAPE ARCHITECTURE  
COMMUNITY PLANNING  
407C 1st Ave. North  
Saskatoon, SK S7K 1X5  
www.crosbyhanna.ca  
T (306) 665-3441  
F (306) 652-9613

