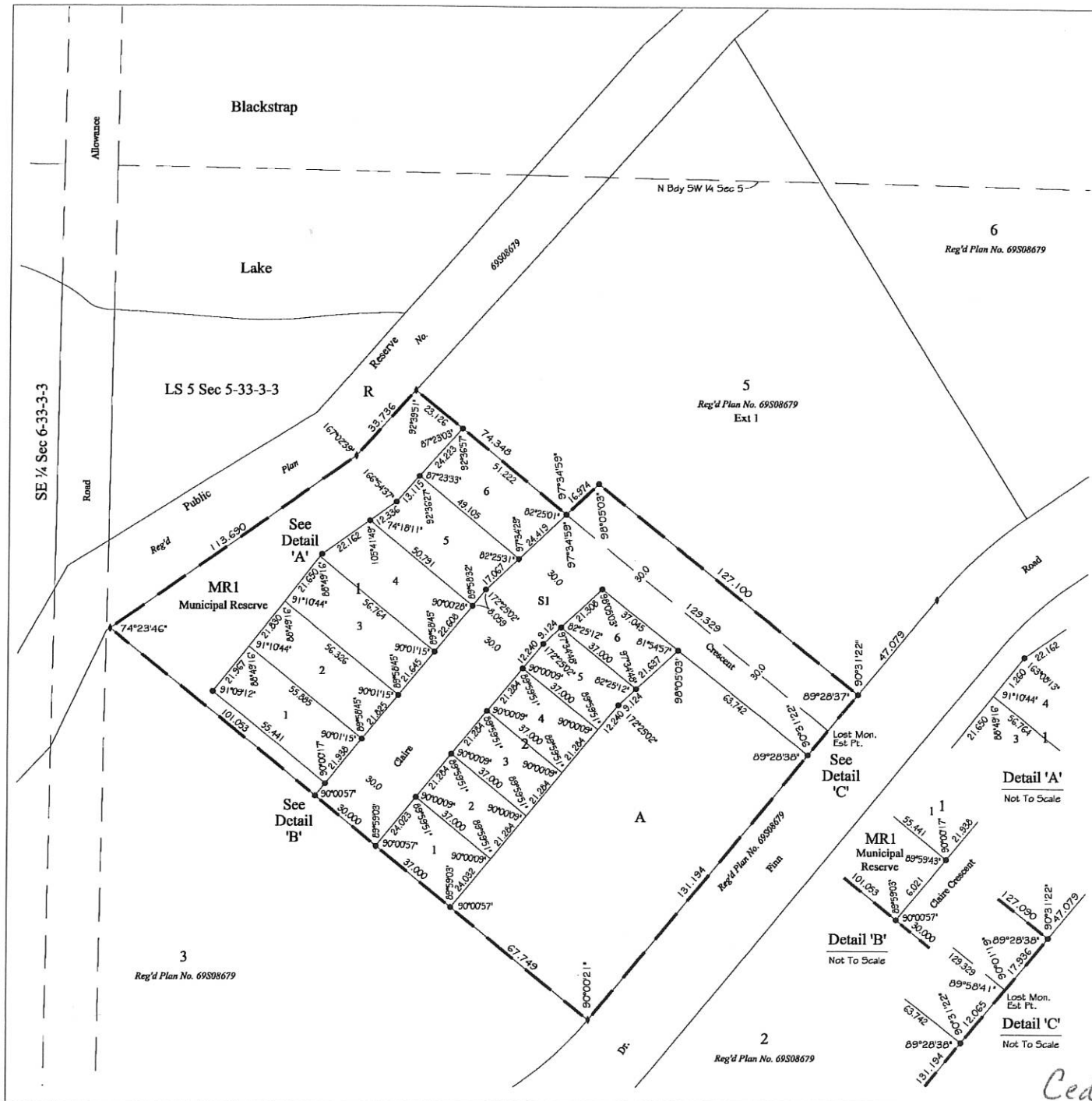


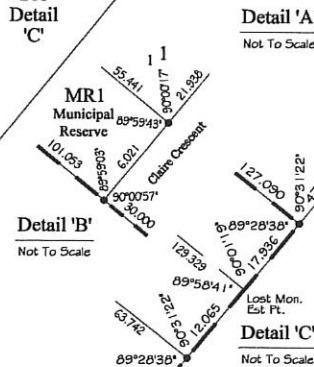
**Plan of Survey
Showing Surface Subdivision
Of All Of Parcel 4
Reg'd Plan No. 69S08679
And Part Of Parcel 5
Reg'd Plan No. 69S08679
SW ¼ Section 5
Twp 33, Rge 3, W 3rd Mer
RM Of Dundurn No. 314
SASKATCHEWAN
W.J. Peters, S.L.S.
June, 2010 - August, 2011
Scale 1:1000**



LEGEND

- * Measurements are in metres and decimals thereof.
- * Area to be approved is outlined by a heavy dashed line.
- * The Unique Identifier of S064 has been stamped on all established Standard Iron Posts.
- * Standard iron posts found are shown thus: ————
- * Standard iron posts planted are shown thus: ————
- * Lot corners marked by iron posts 0.013 x 0.457 unless otherwise shown.
- * All parcels within the line of approval have an Extension 0.
- * Standard road allowances on this plan are 20.117m in width.

Note:
Title to the dedicated lands shown hereon is to issue to the:
RM of Dundurn No. 314
Box 159
Dundurn, SK
S0K 1K0



Cedar Lodge

