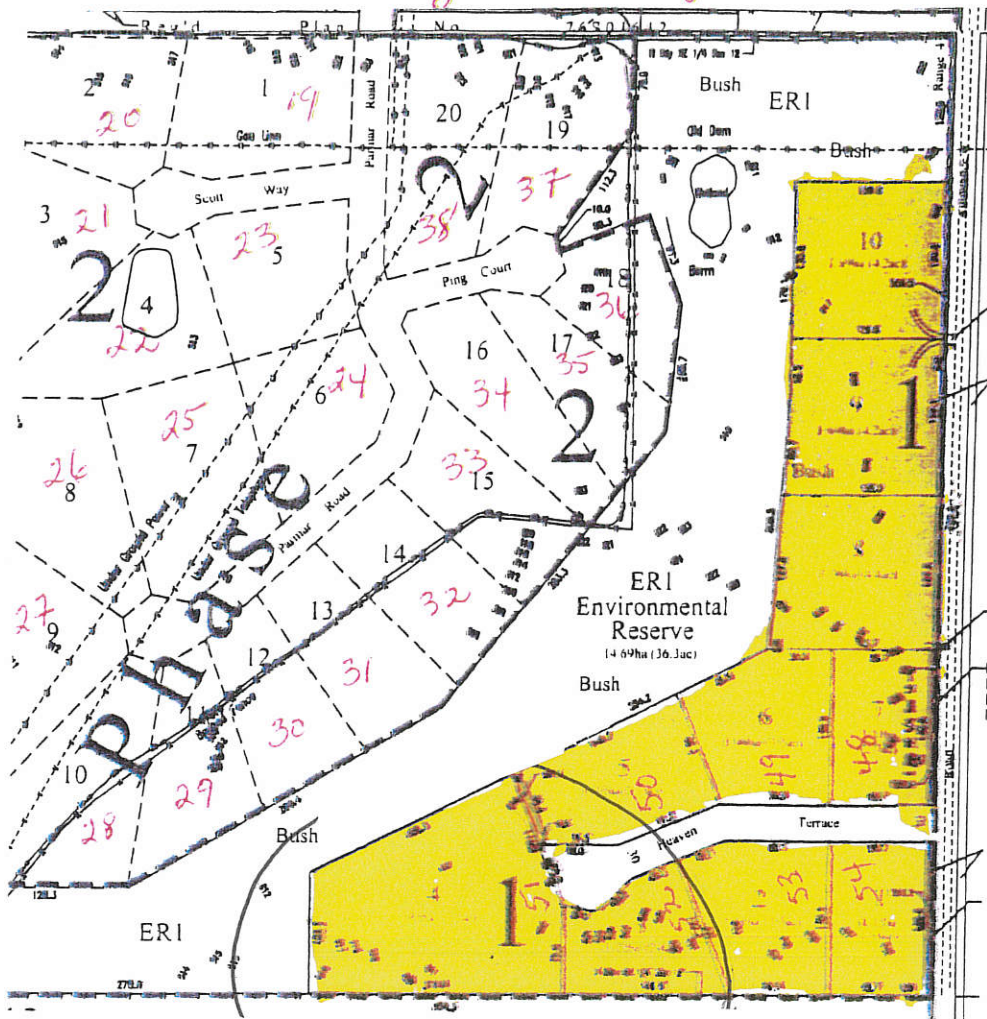


# Regal Valley Estates



PHASE 1

PLAN OF PROPOSED SUBDIVISION  
OF PART OF THE NE 1/4 SECTION 12  
TWP 32, RGE 4, W 3RD MER  
R.M. OF DUNDURN NO. 314  
SASKATCHEWAN

W. J. PETERS, SLS  
Scale 1:4000

## OWNER:

"That I (We) have no objection to the location of the utility lines on the land being subdivided as shown on the plan will grant any easement agreements or forms as may be required by the utility company owning a line".

Ravinder Singh Parmar (undivided 3/10 interest)

Adarshpal Singh Grewal (undivided 1/10 interest)

Project No.: 080221PR-NE12-Phase 1

Initials: TJT

Preliminary Survey: April 3rd, 2008

## NOTES:

- \* Area to be subdivided is outlined with a bold, dashed line and contains 31.42ha (77.6ac).
- \* Distances shown are horizontal at general ground level and are expressed in metres and decimals thereof and may vary  $\pm 5.00$  metres.
- \* Utility lines shown are for reference only. Locations of lines must be verified by the responsible utility prior to any construction.

Dated at Saskatoon in the Province of  
Saskatchewan this 17th day of January, 2012.

Saskatchewan Land Surveyor



**Altus Geomatics**  
Limited Partnership

Toll Free: 1-800-485-8233  
www.altusgeomatics.com

COMMUNITY PLANNING